

Interior Enterprise Architecture (IEA)

FEAC Alumni Symposium – June, 2007

***DOI Business
Architecture***

Diane Reeves,

Department Business Architect



- “It’s All About the Business”
- Federated Architecture
- Segment Architecture



Intent of Enterprise Architecture

We are Change Agents!

- Enterprise Architecture is about **business change**.
- As architects, we are a service provider that helps business organizations become more effective and efficient.
- We must deliver a high quality service that is of value to our customers if we intend to be successful.

DOI
Business
Architecture



DOI has a federated environment

What does that mean?

- Departmental Offices
- Eight Bureaus
- National Business Center

Who makes up the DOI?



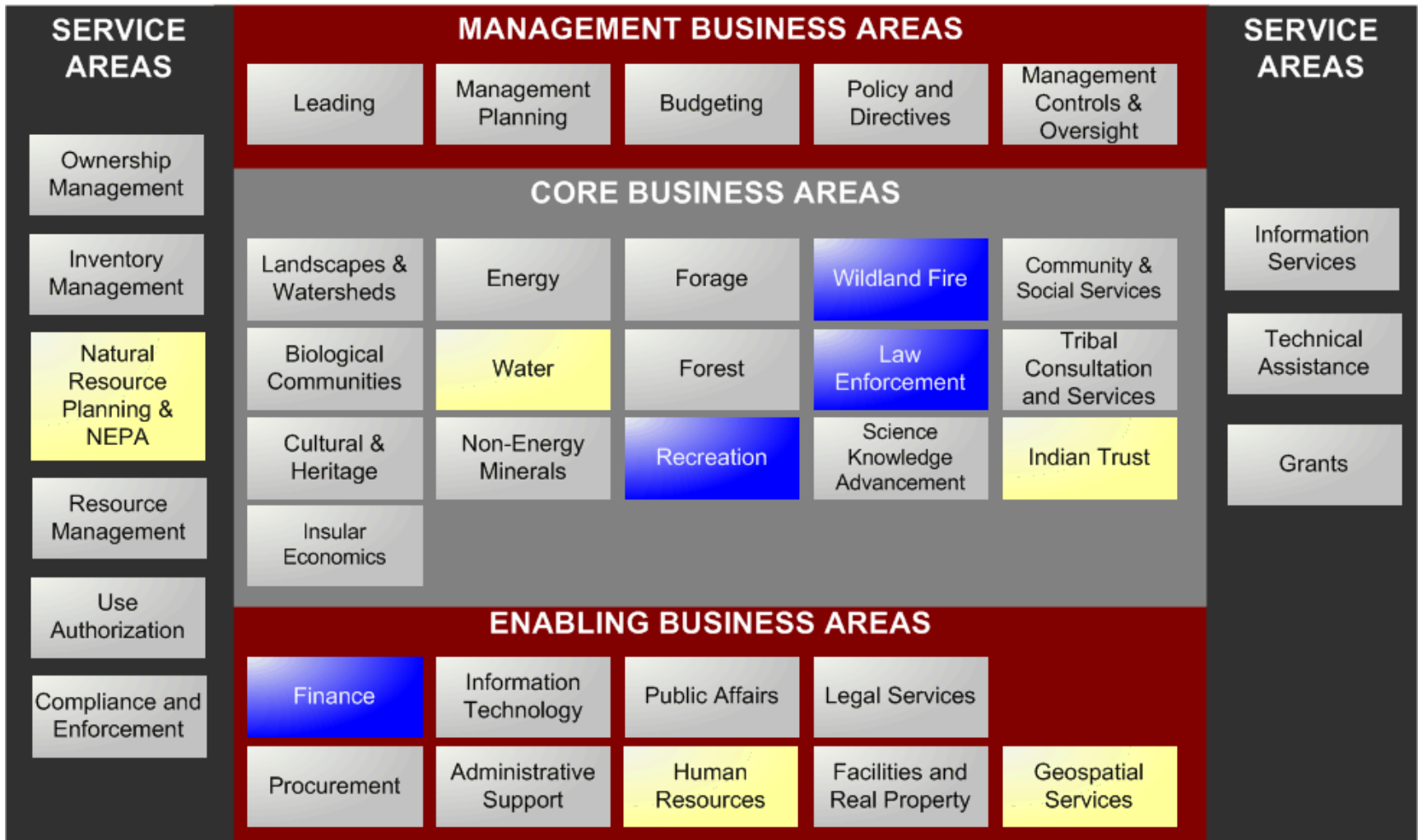
The Complexity of DOI Business



DOI was one of the first agencies to embrace the segmented approach to enterprise architecture.

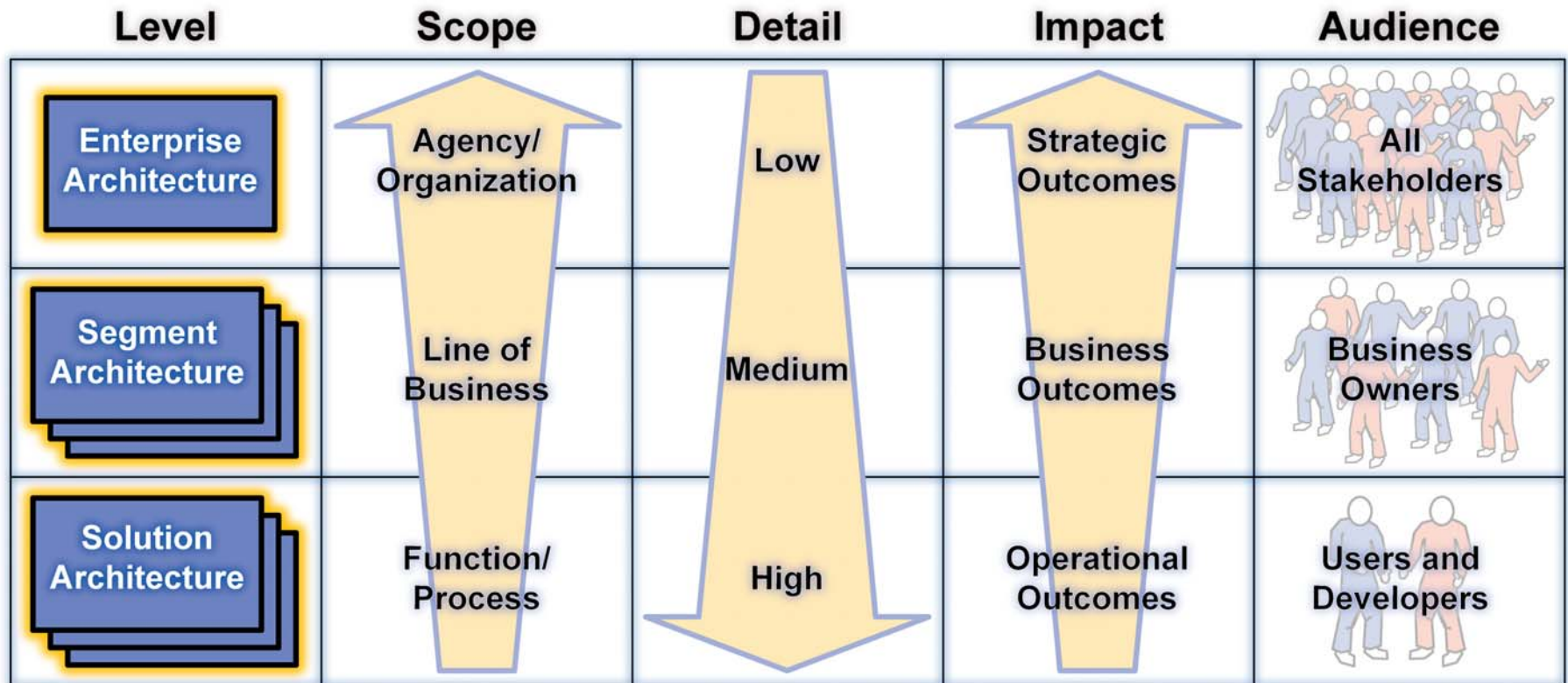


The DOI business segments are below. Blue boxes are segments where the architecture is complete and yellow boxes are segments that are in progress.



Segment Architecture

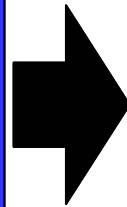
OMB FEA Architecture Levels



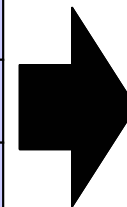
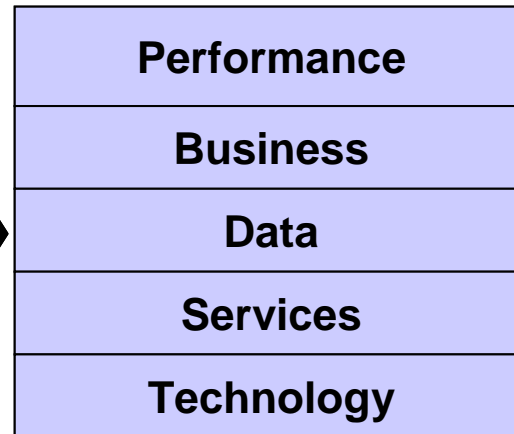
Segment Identification

Enterprise Assets

- Programs
- Processes
- Information
- Applications
- Technology
- Investments
- Personnel
- Organizations
- Facilities



Reference Models

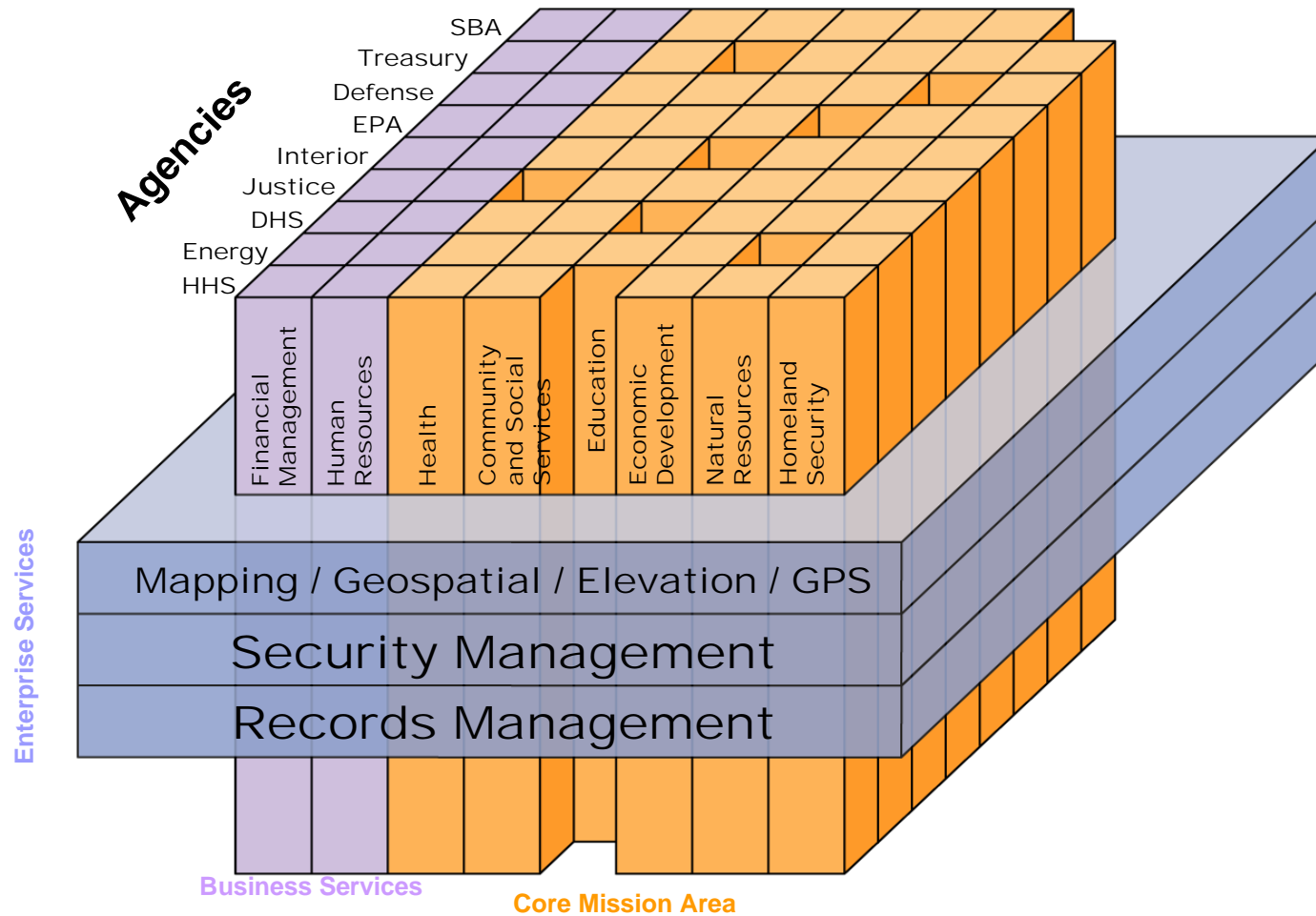


Segments

- Core Mission Areas
- Common Business Services
- Common Enterprise Services



Architecture Segments: LoBs and Services



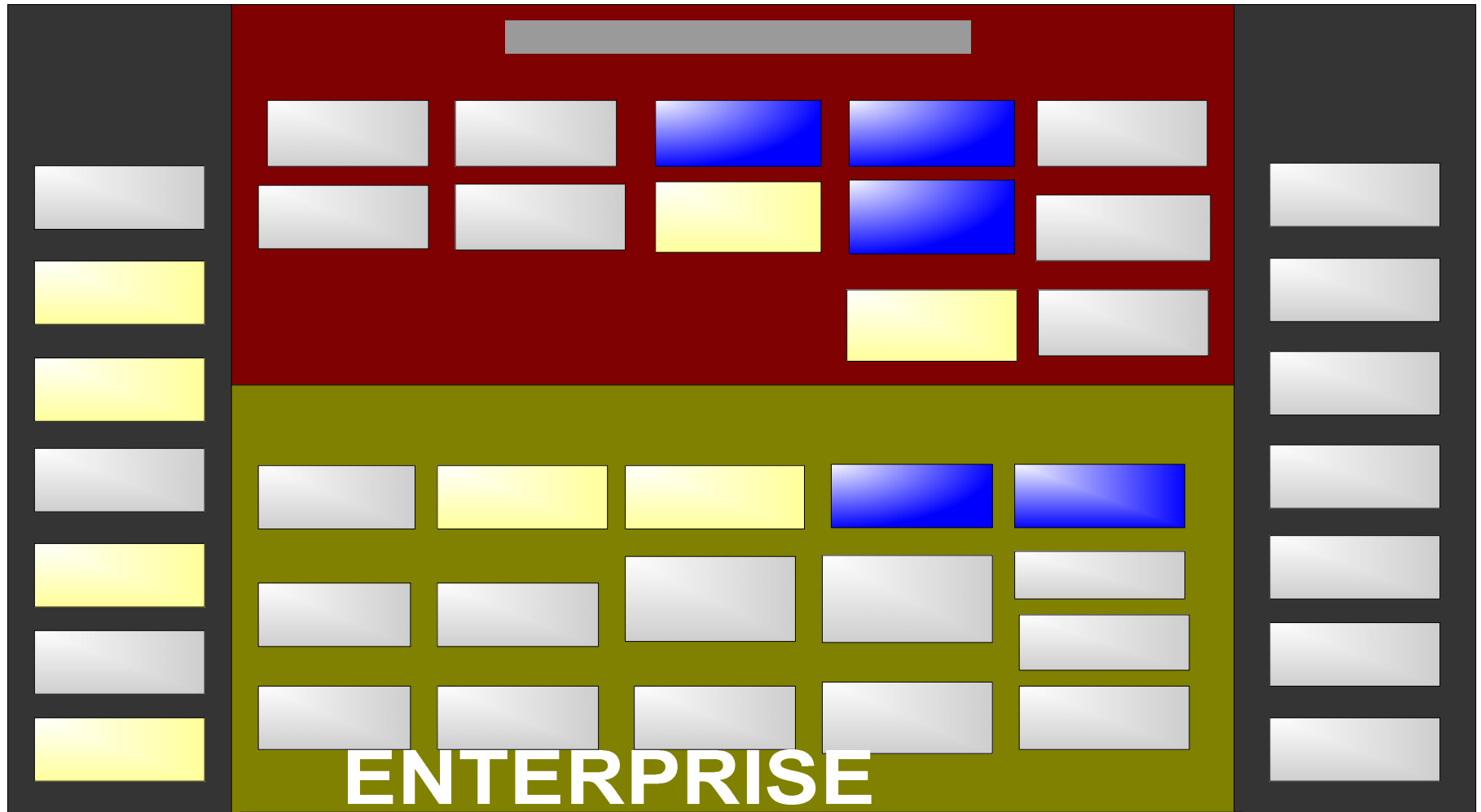


Three Types of Segments

- **Core Mission Area**
 - Unique service area defining the mission or purpose of the agency
 - Core mission areas are defined in the agency Business Model.
- **Business Service:**
 - Common or shared business service supporting a core mission area.
 - Business services are defined in the agency Business Model and include the processes and back office services used to achieve the purpose of the agency.
- **Enterprise Service:**
 - Common or shared IT service supporting core mission areas and business services.
 - Enterprise services are defined in the agency Service Model and include the applications and service components used to achieve the purpose of the agency.



Revised DOI Model with FEA Segments



ENTERPRISE
SERVICE AREAS



Segment Architecture vs. Federated Architecture

- What's the difference?
- Do you need both?
- How do they work together?
- Is it a big deal?

Questions?

***Diane A. Reeves,
Department Business Architect***